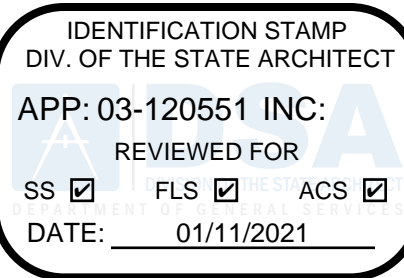
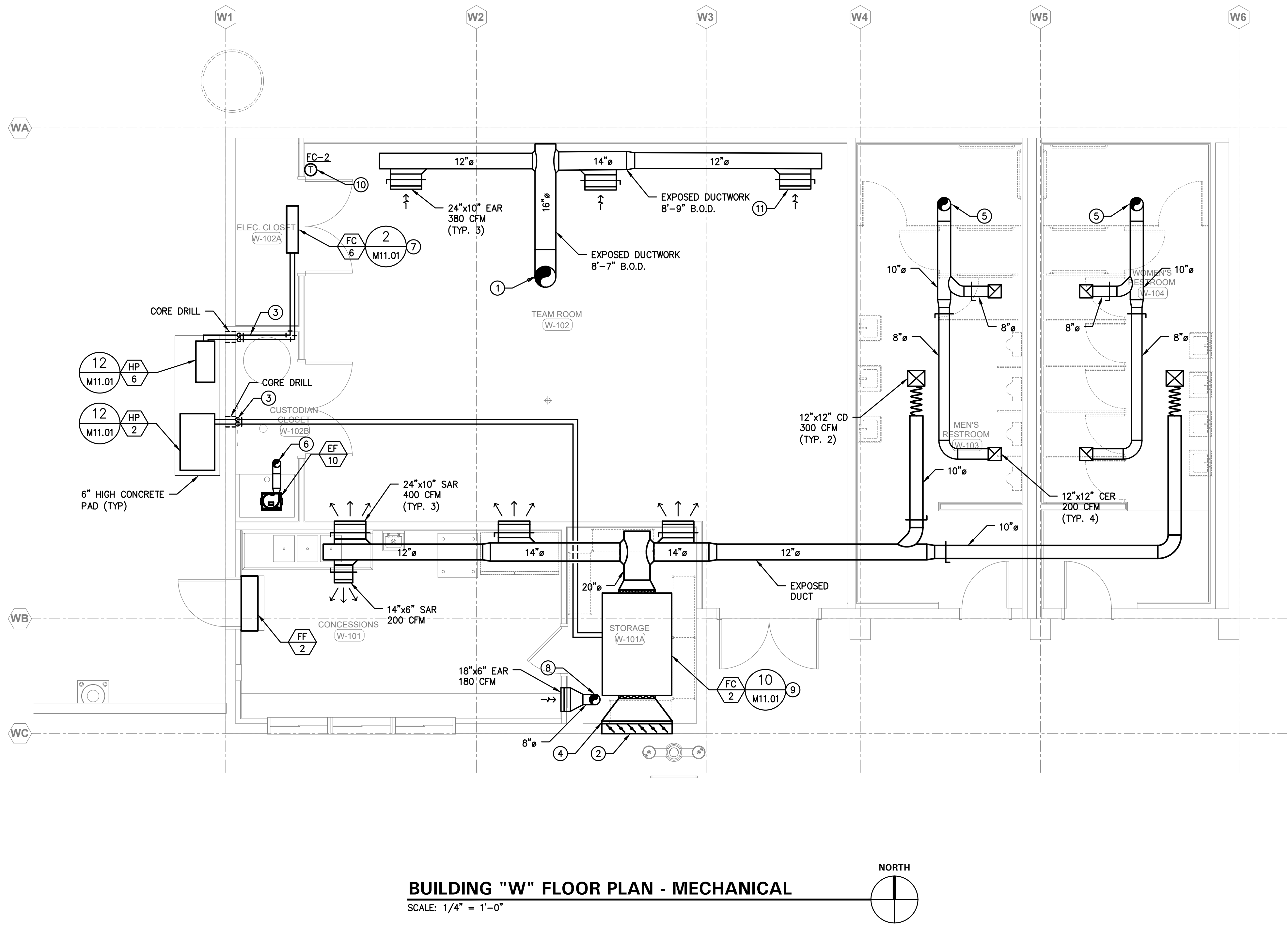
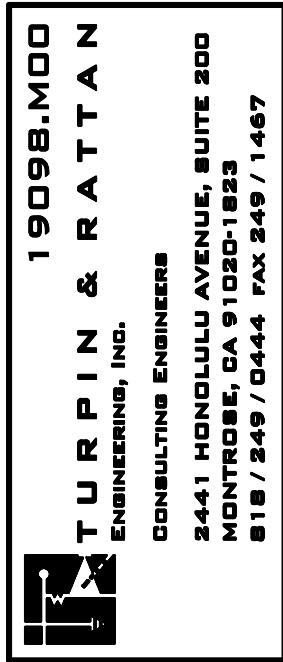


SHEET NOTES

- 16"Ø EXHAUST DUCT, TRANSITION AS REQUIRED UTR TO EXHAUST FAN.
- 36"X24" OSA LOUVER WITH BACKDRAFT DAMPER.
- REFRIGERATION LINES, BOTH INSULATED UP IN WALL. OFFSET AS HIGH AS POSSIBLE.
- PROVIDE 2" FILTER BOX WITH MERV-8 FILTER AT LOUVER OPENING. MATCH SIZE OF LOUVER.
- 10"Ø EXHAUST DUCT TRANSITION AS REQUIRED UTR TO EXHAUST FAN.
- 6"Ø EXHAUST DUCT UTR, TERMINATE WITH ROOF JACK.
- INSTALL FAN COIL UNIT ABOVE DOOR.
- 8"Ø EXHAUST DUCT UTR.
- MOUNT FAN COIL AT 10'-0" ABOVE FINISHED FLOOR.
- PROVIDE NEW SCHNEIDER ELECTRIC SE 8000 SERIES THERMOSTAT. PROVIDE OVERRIDE BUTTON ON THERMOSTAT TO ALLOW "OFF-SCHEDULE" USE.
- MOUNT EXHAUST GRILLE ON CENTER LINE OF ATTACHED DUCTWORK. 8'-9" ABOVE FINISHED FLOOR.



REVISIONS



BUILDING "W" FLOOR PLAN - MECHANICAL

SCALE: 1/4" = 1'-0"

NORWALK LA MIRADA UNIFIED SCHOOL DISTRICT  
LA MIRADA HIGH SCHOOL NEW FOOTBALL  
STADIUM PROJECT  
13520 ADELFA DRIVE, LA MIRADA, CA 90638

DSA # 03-120551



NAC NO. 161-19015  
DATE 12/10/2020

DSA BACKCHECK  
SUBMISSION

FLOOR PLANS  
BUILDING "W" -  
MECHANICAL

M7.02